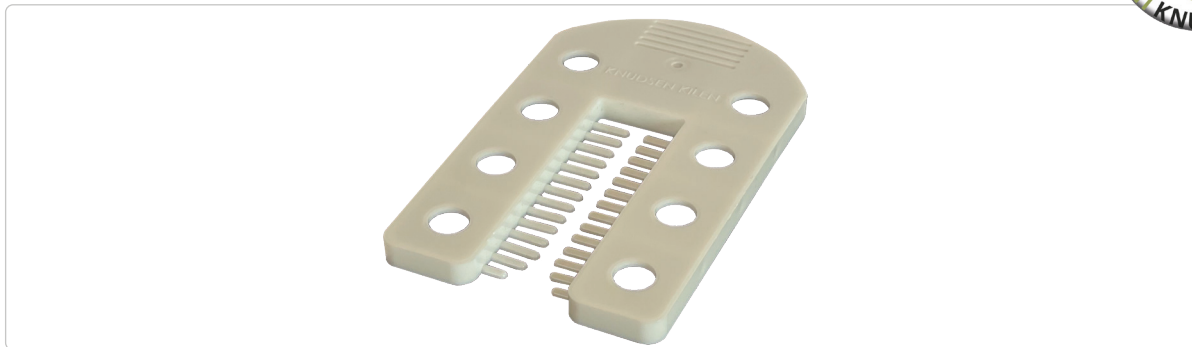




## Data Sheet Fix Shim 4 mm



Knudsen Fix Shims spacer blocks are suitable for all types of tasks where items need to be stabilized, e.g. when installing doors and windows, setting up kitchen and bathroom elements, moldings, panels, etc.

As the Fix Shim is designed as a split piece with fins, which ensures a stable grip on the screw during any assembly, it is particularly suitable for mounting on vertical surfaces.

Fix Shims cannot be used for heavy leveling tasks such as floors, rafters etc.

## Technical information

Properties	Specifications	Remarks
Item number	973305004	
Material	HDPE (High Density Polyethylene)	
Width / Length	45 / 75 mm	
Height	4 mm	
Color	White	
Weight	4,2 grams	
Temperature High (Softing Point)	120 °C	
Temperature Low (Low Temperature Brittleness)	-76 °C	
UV resistance	UV additive added in masterbatch	
Aging effect	At 75 years, no change is seen in the material	The wedge has been tested at 20 degrees according to work standard SPF2000
Surface load	200 kg	
Moisture	Is not affected by moisture, rot og fungus	
Fire	Does not emit toxic fumes in case of fire	
Fire classification	Fuel class B2 / DIN 4102-1	
Capillary breaking	Yes	

